

Reference Data

Fusing current

$I = Kd^{3/2}$ where d is wire diameter in inches, K is a constant depending on the specific metal. (e.g., for copper. $K = 10244$)

Operating Characteristics

Multi Octave Performance / High Q / Low Loss / Controlled characteristics Self Resonance / Mechanical Stability / Axial Leads

Quality

ISO 9001 : 2000 Registered

Applications

Microstrip, Coaxial, Stripline, and "lumped" circuits

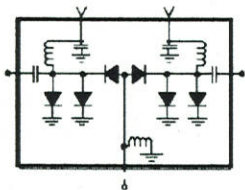
Attenuators / Diode Switches / Amplifiers / Bias Networks/

Control Devices / Filters / Mixers / Modulators / Frequency

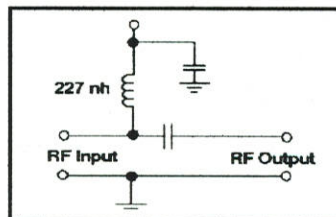
Multipliers / Oscillators / Switches

Typical Application Circuits

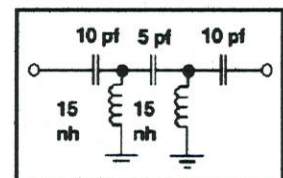
SPDT Switch



Bias "T" Network



Video Filter



Microwave Components Inc.

P.O. Box 4132

South Chelmsford, MA 01824

Telephone: (Voice) 978-256-8251

(Fax) 978-256-9953

Visit our website at <http://www.microwavecoil.com>

E-Mail us at: sales@microwavecoil.com

